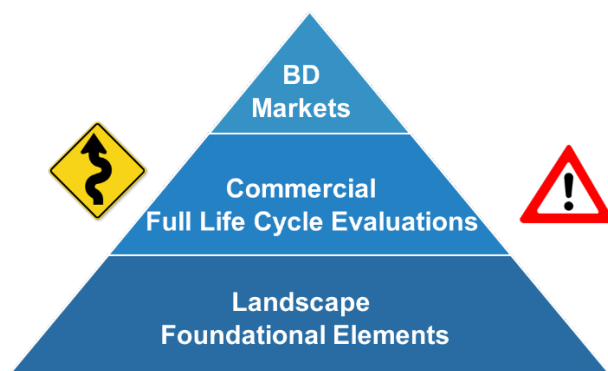
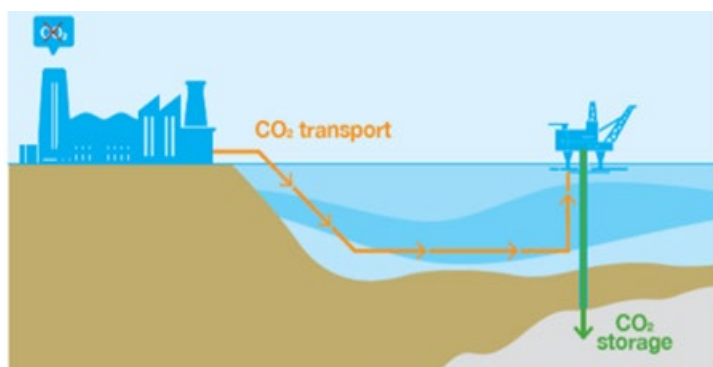


Navigating CCUS – Gulf of Mexico CO₂ Sequestration Market Study Opportunities & Roadmap, Texas & Louisiana Offshore Carbon Storage

The Opportunity: Texas Intercontinental Energy Resources (TIER) and Subsurface Consultants Associates (SCA) are pleased to announce an innovative JV project to the industry. The aim is to **significantly accelerate your organizational capabilities** to understand and formulate CCUS market participation opportunities. You will discover new, fresh insights for both short and long-term business decision making enabling informed investment, funding, and operational decisions.

Integrated Methodology: The approach utilizes a holistic, integrated geo-technical, petroleum system based and field development commercial framework. **We have accounted for the entire value chain and system from emissions to subsurface to the additional system components of pipelines and wells.** This novel integrative approach to assessing markets utilizes a sound data-driven process on each of the system elements to enable full life cycle evaluations.



Discover New Insights: Understand a range of possible outcomes with the energy transition to manage business participation and risk. Key questions addressed include:

Emissions Storage Needs

- What are Emissions Storage Volumes?
 - A 25 Year Outlook to 2050

Storage Methodologies

- What is the Realistic Storage Outlook?
 - Saline Aquifers, EOR, Depleted Fields

Pipeline Transport

- What About the Pipeline Infrastructure?
 - Sizes, Rates and Networks

Storage Field Development – Subsurface, Wells Range of Outcomes

- How Many Projects Will It Take?
 - Size of Projects & Reservoir Storage Size Distributions
 - Phased Development Timing
- What is the Well Count?
 - Well Injectivity & Reservoir Condition Requirements
- How Far From Shore are the Projects, Reservoirs?
 - Impacts Pipeline Development Infrastructure, Cost



C. Susan Howes PE
Ph: 713-789-2444
consulting@scacompanies.com

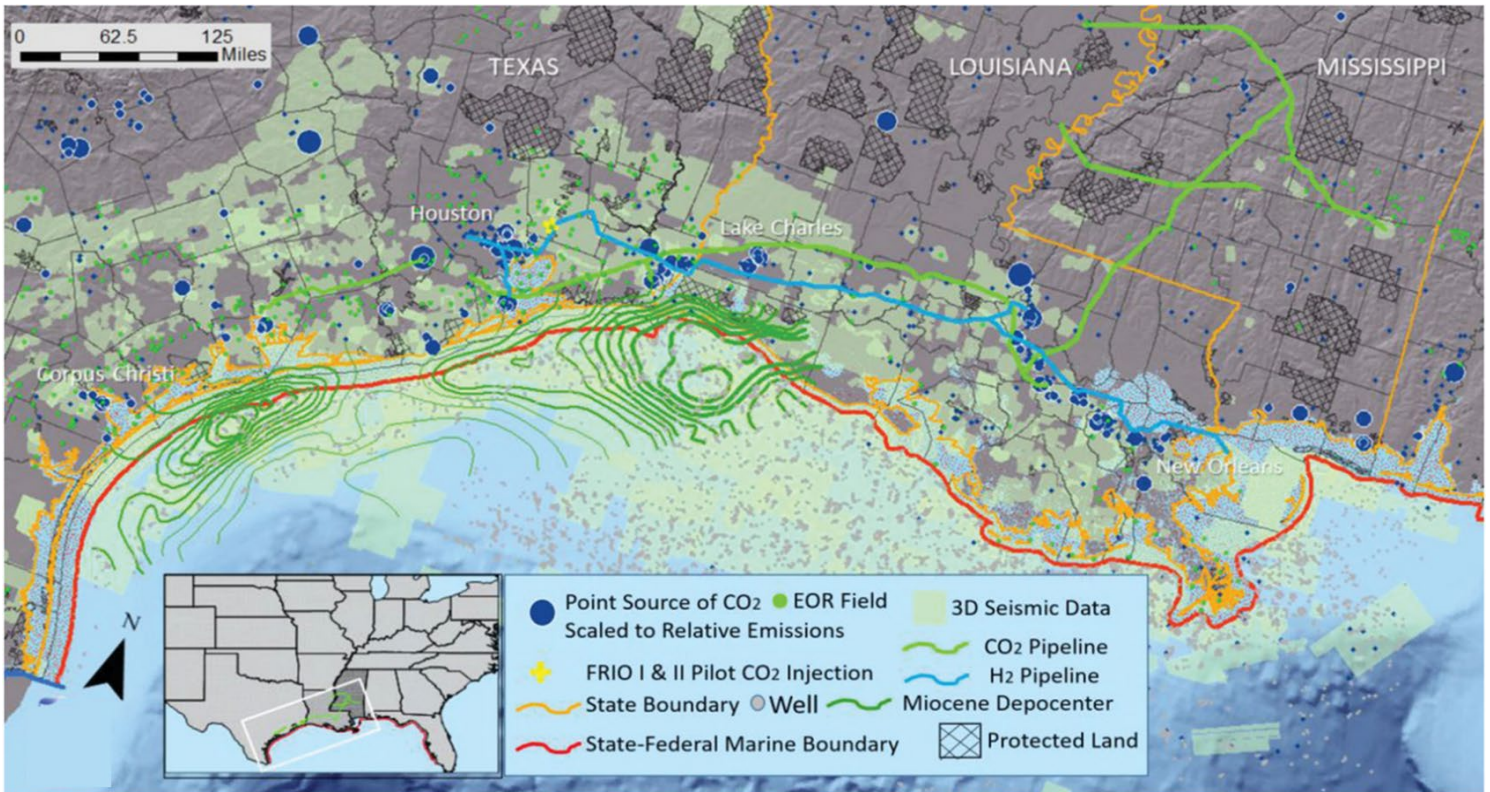
Matthew Nowak
Ph: 713-789-2444
consulting@scacompanies.com



PK Pande PE
Ph: 832-630-0139
pk.pande@texasenergy-resources.com

Gulf of Mexico CO₂ Sequestration Market Study

Study Basis: For the carbon storage infrastructure development outlook, the study focuses on sequestration potential of the Miocene interval in Texas and Louisiana coastal waters. Offshore storage with EOR and in both active and depleted fields are addressed in the context of technical challenges relative to saline aquifer storage. The study incorporates a thorough petroleum systems geosciences basis incorporating geology, geophysics, petrophysics, petroleum reservoir engineering, thermodynamics, PVT and phase behavior. In addition, well construction aspects, production engineering, pipeline engineering and emissions characterization are incorporated.



Additional Insights: To ensure solid business strategy development, the market study provides understanding of **new challenges**, with solid grounding on technology and strategic historical context utilizing these aspects:

North America Existing, Planned Projects

- Context & Key Insights

Carbon Capture Historical Context

- What Has Industry Learned?
- What Do We Already Know?

Regulatory Challenges

- EPA Class VI Injection Well Permitting
- Public Policy Factors, 45Q Tax Credits
- Recent, Upcoming Developments & Insights
- Classifying Storage Resources



C. Susan Howes PE
Ph: 713-789-2444
consulting@scacompanies.com

Matthew Nowak
Ph: 713-789-2444
consulting@scacompanies.com



PK Pande PE
Ph: 832-630-0139
pk.pande@texasenergy-resources.com

Gulf of Mexico CO₂ Sequestration Market Study

Deliverables: This GOM Carbon sequestration market study is designed for impactful engagement and understanding. The content, analysis, synthesis and results are continuously updated with new and emerging industry developments during this energy transition.

For deeper planning work, a range of conceptual field development scenarios are provided across field size, distance from shore, well requirements, development timing, reservoir conditions and other elements.

Given the extensive established foundational efforts, the study is available for deployment in your organization with a rapid multi-week delivery schedule. This delivery schedule is possible as the foundational work for the study is complete utilizing combined multi-decades of experience and resources.

Communication of the study results and its effective utilization incorporates a full report, workshops and briefings as shown below and can also be customized to unique organizational requirements.

Multi-Week Delivery

- Full Report
- Workshops & Briefings
 - Geotechnical, Commercial
 - Management Briefings
- Additional Support



Learn More, Get Started: Please contact SCA or TIER to schedule discussions on further study details and discuss your objectives and requirements.

Pricing: Available on request.

Capture



Transport



Sequester



C. Susan Howes PE
Ph: 713-789-2444
consulting@scacompanies.com

Matthew Nowak
Ph: 713-789-2444
consulting@scacompanies.com



PK Pande PE
Ph: 832-630-0139
pk.pande@texasenergy-resources.com